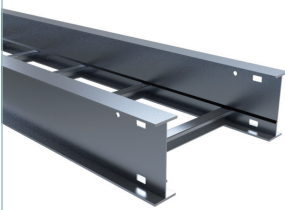




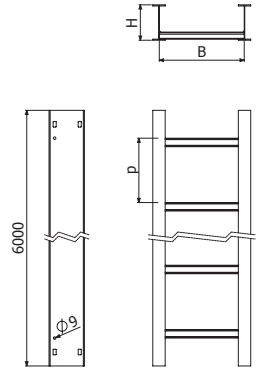
IL H4 (NEMA 16A / 12C)



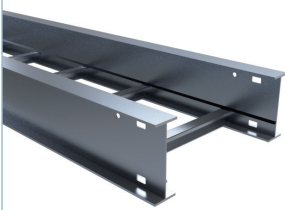
L = 6 m (20 ft)

	B		H		AL					
					p = 6" (150 mm)		p = 9" (230 mm)		p = 12" (300 mm)	
	inch	mm	inch	mm	REF	Kg/m	REF	Kg/m	REF	Kg/m
IL 6x4-p 6M	6	150	4	100	2/10305	2,28	2/10324	2,12	2/10343	2,04
IL 9x4-p 6M	9	230	4	100	2/10306	2,52	2/10325	2,28	2/10344	2,16
IL 12x4-p 6M	12	300	4	100	2/10307	2,76	2/10326	2,44	2/10345	2,28
IL 18x4-p 6M	18	450	4	100	2/10308	3,24	2/10327	2,76	2/10346	2,52
IL 24x4-p 6M	24	600	4	100	2/10309	3,72	2/10328	3,08	2/10347	2,76
IL 30x4-p 6M	30	750	4	100	2/10310	4,20	2/10329	3,40	2/10348	3,00
IL 36x4-p 6M	36	900	4	100	2/10311	4,68	2/10330	3,72	2/10349	3,24

2 x JUI 4 (2/11220)



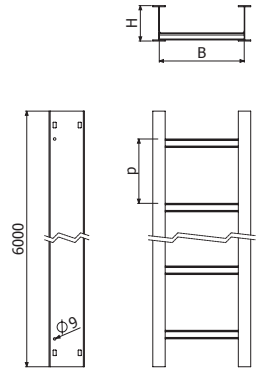
IL H5 (NEMA 16A / 12C)



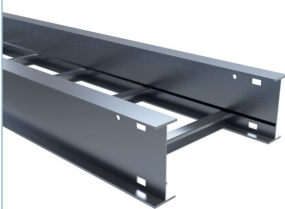
L = 6 m (20 ft)

	B		H		AL					
					p = 6" (150 mm)		p = 9" (230 mm)		p = 12" (300 mm)	
	inch	mm	inch	mm	REF	Kg/m	REF	Kg/m	REF	Kg/m
IL-6x5-p 6M	6	150	5	125	2/14942	2,41	2/14943	2,26	2/14944	2,19
IL 9x5-p 6M	9	230	5	125	2/10312	2,58	2/10331	2,34	2/10350	2,22
IL 12x5-p 6M	12	300	5	125	2/10313	2,82	2/10332	2,50	2/10351	2,34
IL 18x5-p 6M	18	450	5	125	2/10314	3,30	2/10333	2,82	2/10352	2,58
IL 24x5-p 6M	24	600	5	125	2/10315	3,78	2/10334	3,14	2/10353	2,82
IL 30x5-p 6M	30	750	5	125	2/10316	4,26	2/10335	3,46	2/10354	3,06
IL 36x5-p 6M	36	900	5	125	2/10317	4,74	2/10336	3,78	2/10355	3,30

2 x JUI 5 (2/11221)



IL H6 (NEMA 20A / 16B / 12C)



L = 6 m (20 ft)

	B		H		AL					
					p = 6" (150 mm)		p = 9" (230 mm)		p = 12" (300 mm)	
	inch	mm	inch	mm	REF	Kg/m	REF	Kg/m	REF	Kg/m
IL 9x6-p 6M	9	230	6	150	2/10318	3,08	2/10337	2,84	2/10356	2,72
IL 12x6-p 6M	12	300	6	150	2/10319	3,32	2/10338	3,00	2/10357	2,84
IL 18x6-p 6M	18	450	6	150	2/10320	3,80	2/10339	3,32	2/10358	3,08
IL 24x6-p 6M	24	600	6	150	2/10321	4,28	2/10340	3,64	2/10359	3,32
IL 30x6-p 6M	30	750	6	150	2/10322	4,76	2/10341	3,96	2/10360	3,56
IL 36x6-p 6M	36	900	6	150	2/10323	5,24	2/10342	4,28	2/10361	3,80

2 x JUI 6 (2/11222)

